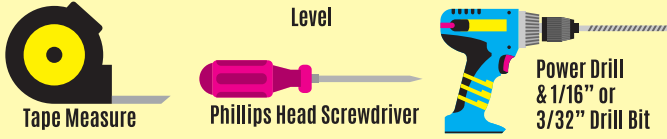


## Tools You'll Need



## Hardware Kit



## Step 3

Measure from the bottom of the horizontal line up the distance of the height of the board plus 1/4" & mark that distance. Using a level draw another line at that distance the width of the board.

## Step 4

Install an opposing bracket with the vertical leg facing down. The horizontal leg should be on the top line & the fastener must be in about the middle of the slot on the vertical leg. **DO NOT** tighten the fastener all the way, just enough to stay in place and can be tapped downward on the top edge of the board.

## Step 5

Place the bottom edge on the markerboard on the top of the bottom brackets and hold it against the wall and under the horizontal leg of the top brackets.

## Step 6

Using the self tapping sheet metal screws, put a screw through the hole in the horizontal leg of the bracket into the outside edge of the framing that is resting on the bracket

## Step 7

Continuing to hold the board in position, tap the top brackets down on the top edge of the board. Install self tapping screws through the hole in the horizontal leg of the bracket into the top edge of the framing.

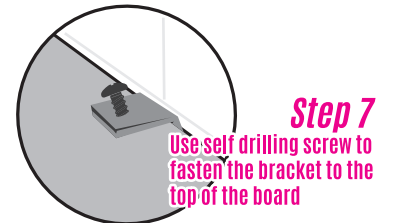
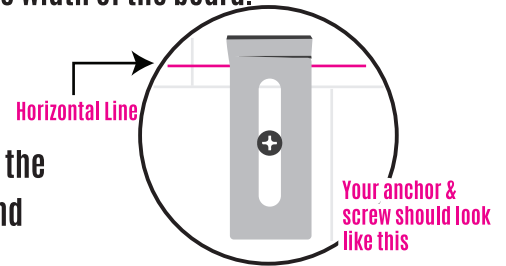
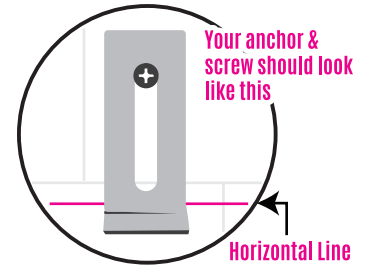
**Check the fasteners & anchors to make sure they are properly installed & there is no movement.**

## Step 1

Determine the distance to the bottom of the board. Mark that distance & with a level draw a horizontal line the width of the board

## Step 2

Install a "L" Bracket with the bottom of the bracket on the horizontal line. Install the anchor & screw combination at the top of the slot. Set the screw tight into the anchor. Repeat this with the second bottom "L" Bracket putting it no further than 24" apart from the first one.



**Step 6**  
Use self drilling screw to fasten the bracket to the bottom of the board

